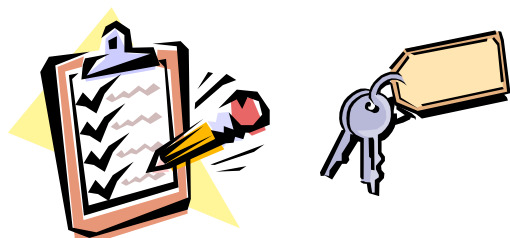


**The Orland Park
Church Car Ministry
assists individuals
or families to attain
personal and/or
financial self-
sufficiency by
providing basic
transportation
primarily for
employment reasons.**



Vehicle Donations Needed!

Unlike other car donation programs the Orland Park Church Car Ministry distributes donated vehicles to needy families in the Chicagoland area, which allows for a tax deduction on the Full Private Party Value of the vehicle.

Please team with us in this important work!

All donated vehicles are checked by a licensed mechanic. Non-cosmetic repairs are made before the vehicle is given to a qualified applicant on the waiting list. Vehicles are meant to provide a family approximately one year of service.

Please team with us in this important work!

Through these efforts Christian Mercy is shown to those in need of reliable transportation to get to employment, children to day care and school, families to church, and other necessities of daily living.

Please team with us in this important work!

Car distributions are generally reserved for households without a car, not families wanting a second car or young adults considered as dependents.

Participant Qualifications

To qualify for participation you must:

- 1 Be an active member in good standing for a minimum of 3 years in a Bible-believing church.
- 2 Be involved at your church both personally and also towards helping others to grow in the faith.
- 3 Complete an Application Form and meet with Senior Pastor to review it and complete the Pastor Checklist.
- 4 Provide a Signed Letter of Recommendation from the Senior Pastor of your church.
- 5 Be at least 21 years of age and have a valid driver's license.
- 6 Provide proof of auto insurance, (with minimum 6 month expiration), prior to receiving a vehicle.
- 7 Have the money for the cost of the title transfer, vehicle registration, and license plates. (approx. \$200)
- 8 Have a level of ongoing income to support vehicle operational costs including:
 - Rising fuel costs and regular oil changes every 3,000 miles.
 - Unexpected repair costs associated with owning a used vehicle.
 - Ongoing liability insurance costs on the vehicle.

Involvement in a mentoring relationship towards personal and financial self-sufficiency is strongly recommended with a church or local Christian support agency.

**PLEASE UNDERSTAND THAT THE
APPLICATION PROCESS FOR THIS
PROGRAM DOES NOT GUARANTEE
THAT YOU WILL RECEIVE A CAR
FROM THIS MINISTRY.**

What is Orland Park Church Car Ministry?

A ministry coordinated by a team of volunteers from churches in the Chicagoland area, designed to provide a service to local churches and communities. This program assists individuals or families to attain personal and/or financial self-sufficiency by providing basic transportation primarily for employment reasons.

Key areas of participation and responsibility include;

Caring Church family: It is our strong desire that each applicant to this program is able to attain their personal and spiritual goals through a strong relationship with their church, for support and encouragement that only a local church family can provide.

Personal financial responsibility: Owning a used vehicle has significant operational costs associated with it. We strongly feel that each applicant must have a level of income to support these costs to ensure success and avoid potential discouragement.

Senior Pastor Involvement: We require local church Pastor participation with us in the Car Ministry application process to allow for a level of ongoing accountability from the applicant.

Join Us in Partnership!

Many partners make the Orland Park Church Car Ministry a stronger program. Churches and Christian support agencies can help by soliciting car donations, promoting the Car Ministry, and providing funding. **Anyone donating a good used vehicle is a very important partner with us in this work!**

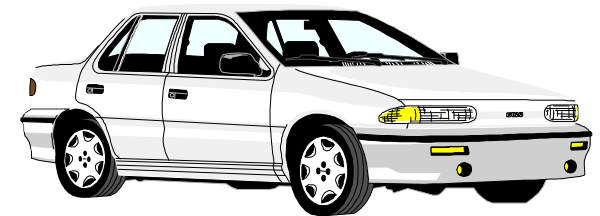
1 John 3:17-18 If anyone has material possessions and sees his brother in need but has no pity on him, how can the love of God be in him? Dear children, let us not love with words or tongue but with actions and in truth.

Orland Park Church Car Ministry

7500 West Sycamore Drive
Orland Park, IL 60462
Web Site: www.opcrc.org

Phone: 708.532.4900 ext. 300
Fax: 708.532.4971

Orland Park Church Car Ministry



A ministry coordinated by a team
of volunteers from churches in
the Chicagoland area



This document was created with Win2PDF available at <http://www.win2pdf.com>.
The unregistered version of Win2PDF is for evaluation or non-commercial use only.
This page will not be added after purchasing Win2PDF.